

➤ Aluminum Reverb Furnace



1. Corundum buildup on the surface of a traditional non-wetting 60% alumina low cement castable.
2. No corundum on the surface of the WAM AL II HD.
(6 months after installation)



Belly Band (Slag Line)

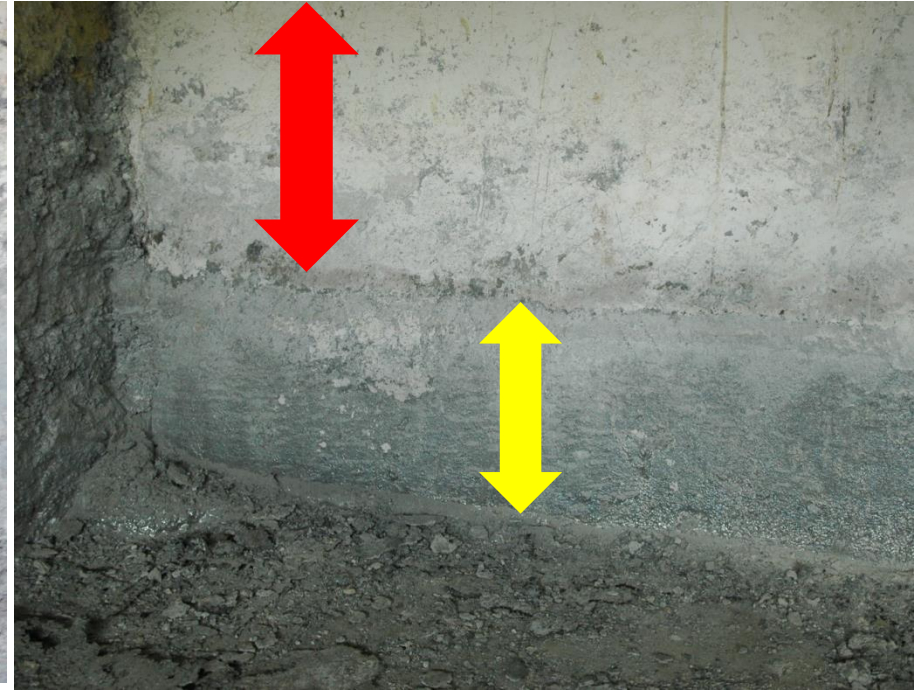


Metal Line : The Aluminum is just adhered to the surface.

➤ After clearance for WAM AL II HD



After melt out



After clearance

➤ The appearance of tap hole



No corundum buildup so that the hole size was not reduced.